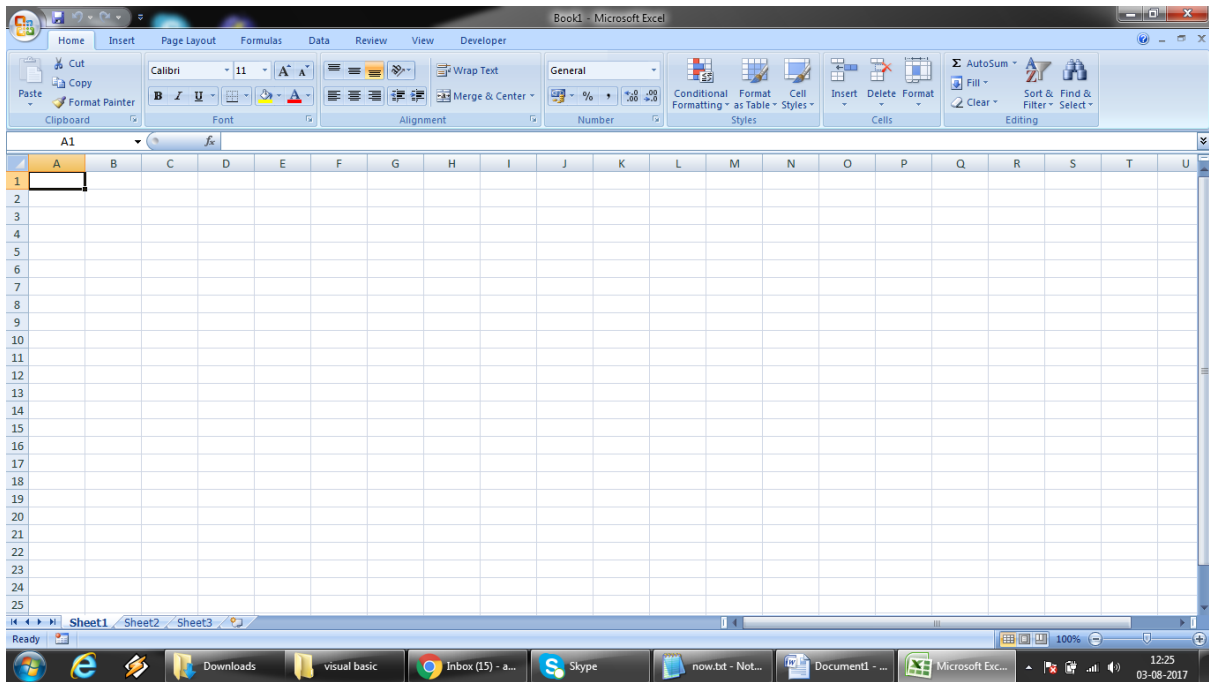
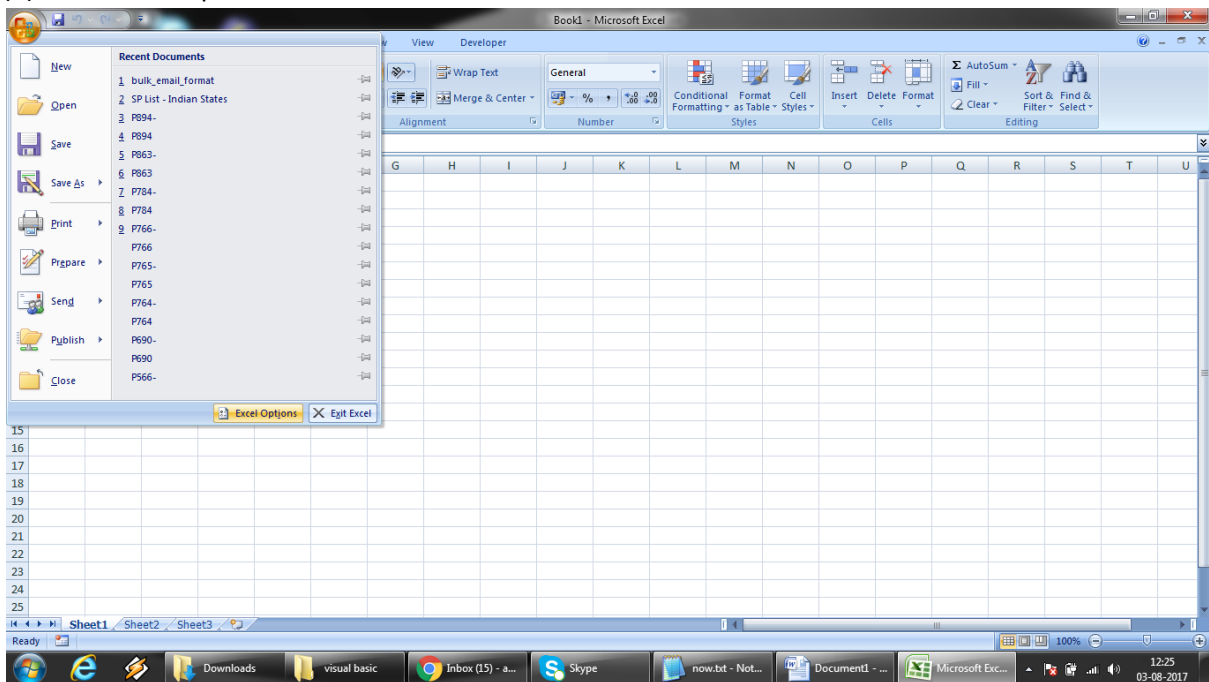


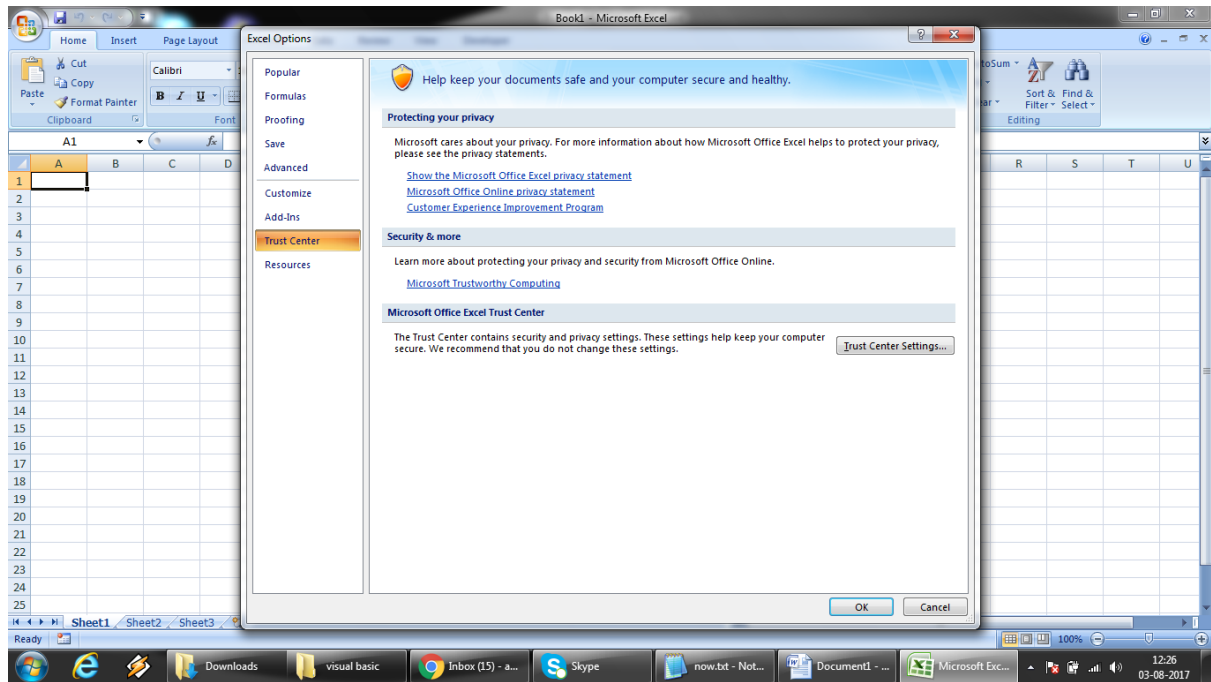
(a) Open the Excel file containing macro



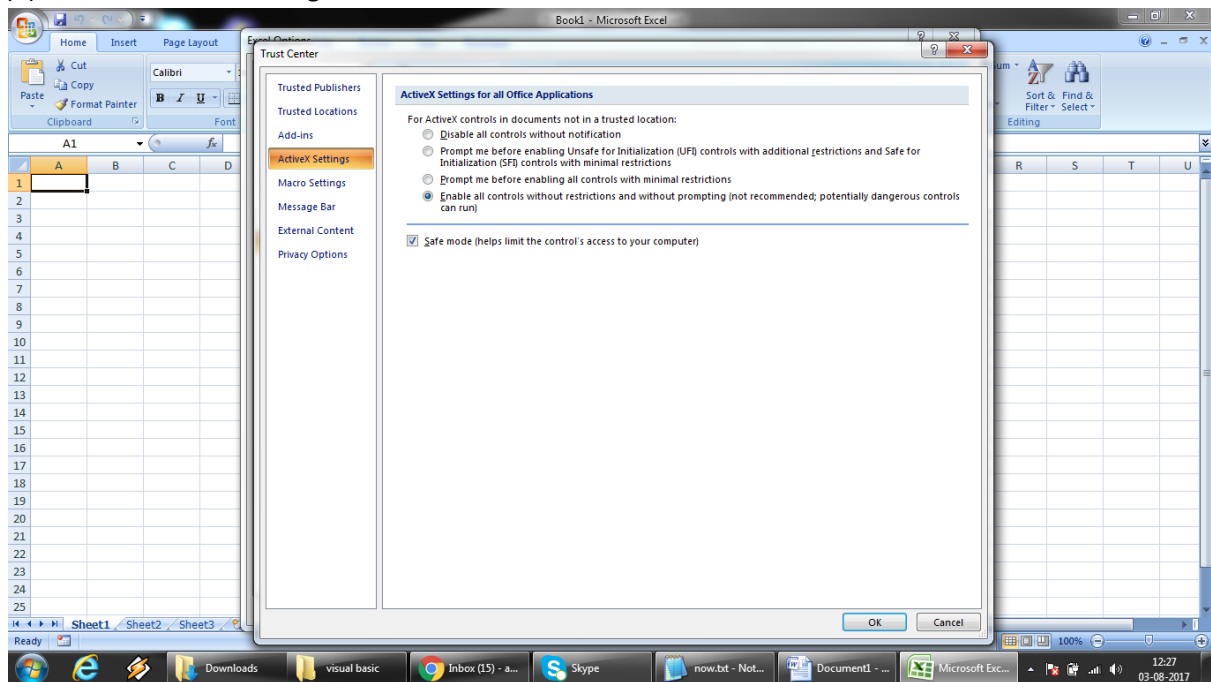
(b) Go to Excel Options



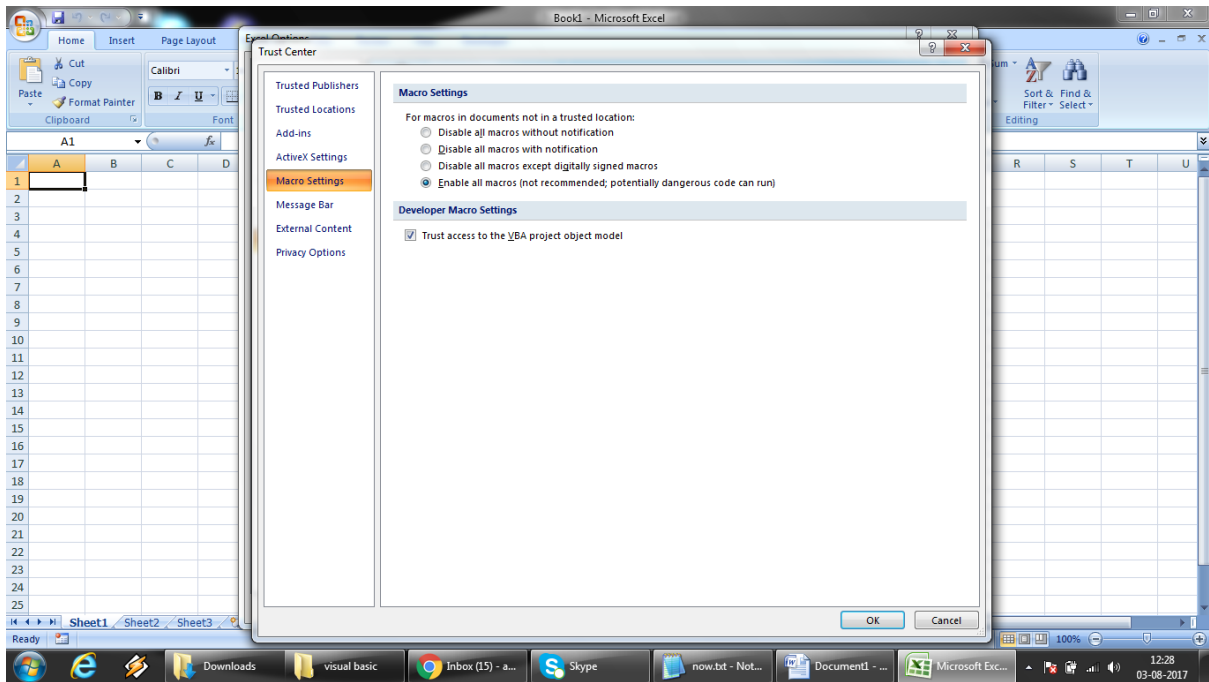
(c) Select Trust Center and click on Trust Center Settings



(d) Click on ActiveX settings. Select Enable all controls and tick safe mode.



(e) Then click on Macro Settings. Select Enable all macros and tick trust access to vba project.



(f) Click OK. Save the file. Close Excel. Reopen and start working.